

| | |
|--|----|
| GLOBAL & REGIONAL INDICES – BLUE-CHIP AND BENCHMARK PERFORMANCE | 1 |
| GLOBAL & REGIONAL INDICES – BLUE-CHIP AND BENCHMARK YEAR TO DATE PERFORMANCE CHARTS | 2 |
| GLOBAL & REGIONAL INDICES – BLUE-CHIP AND BENCHMARK VOLATILITY AND CORRELATION | 3 |
| GLOBAL & REGIONAL SUPERSECTOR INDICES – YEAR TO DATE PERFORMANCE CHARTS | 4 |
| EUROPEAN INDICES – PERFORMANCE, VOLATILITY AND CORRELATION | 5 |
| REGIONAL SELECT DIVIDEND INDICES – PERFORMANCE, VOLATILITY AND CORRELATION | 6 |
| REGIONAL SELECT DIVIDEND INDICES – PERFORMANCE, VOLATILITY AND CORRELATION-CHARTS | 7 |
| REGIONAL SELECT DIVIDEND INDICES – CORRELATION | 8 |
| DJ EURO STOXX 50 VOLATILITY INDEX (VSTOXX) – HIGH, LOW, MEAN, CORRELATION AND SPREAD | 9 |
| EUREX FUTURES & OPTIONS – VOLUME AND OPEN INTEREST | 10 |
| EUREX FUTURES & OPTIONS ON DJ STOXX BLUE-CHIP & SECTOR INDICES – DEVELOPMENT OF VOLUME AND OPEN INTEREST | 11 |
| ETFs ON DJ STOXX BLUE-CHIP INDICES – ASSETS UNDER MANAGEMENT AND TURNOVER | 12 |
| ETFs ON DJ STOXX SUPERSECTOR INDICES – ASSETS UNDER MANAGEMENT AND TURNOVER | 13 |
| ETFs ON DJ EURO STOXX SUPERSECTOR INDICES – ASSETS UNDER MANAGEMENT AND TURNOVER | 14 |
| ETFs ON DJ STOXX ON BROAD, SIZE, STYLE & SPECIALTY INDICES – ASSETS UNDER MANAGEMENT AND TURNOVER | 15 |
| ETFs ON DJ BLUE-CHIP, TIMI, SIZE & STYLE INDICES – ASSETS UNDER MANAGEMENT AND TURNOVER | 16 |
| ETFs ON DJ SECTOR & SPECIALTY INDICES – ASSETS UNDER MANAGEMENT AND TURNOVER | 17 |
| ETFs ON DJ WILSHIRE INDICES – ASSETS UNDER MANAGEMENT AND TURNOVER | 18 |
| ETFs ON DJ STOXX BLUE-CHIP & SECTOR INDICES – DEVELOPMENT OF ASSETS AND TURNOVER | 19 |
| DJ STOXX INDICES – COMPOSITION CHANGES | 20 |
| CONTACTS | 21 |

Please see the disclosures at the end of this report

GLOBAL & REGIONAL INDICES – BLUE-CHIP AND BENCHMARK PERFORMANCE



| | GLOBAL*** | | | EUROPE | | | EUROZONE | | | AMERICAS*** | | | ASIA/PACIFIC*** | | |
|-----------------------------|-------------|---------------|---------------|-------------|---------------|---------------|-------------|---------------|---------------|-------------|---------------|---------------|-----------------|---------------|---------------|
| | Index level | Change month | Change YTD | Index level | Change month | Change YTD | Index level | Change month | Change YTD | Index level | Change month | Change YTD | Index level | Change month | Change YTD |
| Blue-Chip* | 231.39 | 0.22% | 0.22% | 3760.90 | 1.72% | 1.72% | 4178.54 | 1.42% | 1.42% | 12621.69 | 1.27% | 1.27% | 164.23 | -0.12% | -0.12% |
| Benchmark** | 276.52 | 1.07% | 1.07% | 372.72 | 2.04% | 2.04% | 403.74 | 2.05% | 2.05% | 339.69 | 1.49% | 1.49% | 147.83 | 0.87% | 0.87% |
| Supersectors | | | | | | | | | | | | | | | |
| Automobile & Parts | 308.53 | 0.48% | 0.48% | 300.57 | 3.68% | 3.68% | 293.56 | 3.41% | 3.41% | 222.87 | 3.20% | 3.20% | 351.10 | -0.80% | -0.80% |
| Banks | 260.74 | 0.73% | 0.73% | 526.54 | 3.18% | 3.18% | 464.04 | 3.83% | 3.83% | 553.93 | -0.28% | -0.28% | 86.90 | 0.15% | 0.15% |
| Basic Resources | 295.29 | 0.82% | 0.82% | 551.21 | 0.74% | 0.74% | 402.83 | 4.42% | 4.42% | 257.32 | 3.14% | 3.14% | 189.82 | 0.41% | 0.41% |
| Chemicals | 284.81 | 2.22% | 2.22% | 426.82 | 3.50% | 3.50% | 517.16 | 3.19% | 3.19% | 277.45 | 4.14% | 4.14% | 155.70 | 0.09% | 0.09% |
| Construction & Materials | 192.53 | 4.34% | 4.34% | 415.41 | 5.53% | 5.53% | 464.39 | 5.41% | 5.41% | 292.07 | 5.81% | 5.81% | 86.05 | 4.18% | 4.18% |
| Financial Services | 427.76 | 3.36% | 3.36% | 482.42 | 2.09% | 2.09% | 514.27 | 5.09% | 5.09% | 819.83 | 3.70% | 3.70% | 176.51 | 4.45% | 4.45% |
| Food & Beverage | 247.89 | 0.65% | 0.65% | 302.89 | 1.88% | 1.88% | 309.93 | 1.35% | 1.35% | 247.38 | 1.22% | 1.22% | 104.18 | -0.47% | -0.47% |
| Health Care | 339.37 | 1.69% | 1.69% | 454.84 | 2.71% | 2.71% | 526.75 | -1.56% | -1.56% | 334.10 | 2.72% | 2.72% | 242.42 | -4.44% | -4.44% |
| Industrial Goods & Services | 244.70 | 1.97% | 1.97% | 325.82 | 4.66% | 4.66% | 512.39 | 5.15% | 5.15% | 297.59 | 1.48% | 1.48% | 147.78 | 1.95% | 1.95% |
| Insurance | 322.68 | -0.69% | -0.69% | 288.40 | 0.72% | 0.72% | 312.17 | 0.57% | 0.57% | 494.79 | -1.22% | -1.22% | 180.18 | 2.83% | 2.83% |
| Media | 289.24 | 2.24% | 2.24% | 249.20 | 3.60% | 3.60% | 243.79 | 3.19% | 3.19% | 337.60 | 2.48% | 2.48% | 453.72 | 0.72% | 0.72% |
| Oil & Gas | 408.06 | -2.71% | -2.71% | 397.59 | -3.41% | -3.41% | 423.85 | -4.18% | -4.18% | 484.20 | -1.62% | -1.62% | 185.91 | -2.65% | -2.65% |
| Personal & Household Goods | 355.75 | 1.89% | 1.89% | 399.72 | 3.25% | 3.25% | 354.34 | 3.44% | 3.44% | 384.59 | 1.93% | 1.93% | 177.61 | 1.99% | 1.99% |
| Retail | 286.17 | 2.72% | 2.72% | 334.69 | 2.20% | 2.20% | 333.57 | -0.08% | -0.08% | 360.63 | 4.25% | 4.25% | 131.52 | -0.56% | -0.56% |
| Technology | 388.73 | 0.90% | 0.90% | 306.75 | -0.31% | -0.31% | 348.70 | -0.37% | -0.37% | 522.39 | 1.85% | 1.85% | 165.93 | -3.64% | -3.64% |
| Telecommunications | 256.64 | 2.16% | 2.16% | 332.39 | 3.05% | 3.05% | 475.68 | 1.51% | 1.51% | 186.58 | 3.07% | 3.07% | 189.22 | 1.28% | 1.28% |
| Travel & Leisure | 242.48 | 2.22% | 2.22% | 212.84 | 2.62% | 2.62% | 181.52 | 5.41% | 5.41% | 381.40 | 2.70% | 2.70% | 125.80 | 2.63% | 2.63% |
| Utilities | 216.36 | -0.13% | -0.13% | 465.91 | 0.21% | 0.21% | 510.98 | -0.44% | -0.44% | 154.02 | -0.27% | -0.27% | 134.15 | 3.73% | 3.73% |
| Theme | | | | | | | | | | | | | | | |
| Select Dividend | | | | 3303.2 | 1.69% | 1.69% | 3336.64 | 2.11% | 2.11% | 499.27 | 0.76% | 0.76% | 356.91 | 1.22% | 1.22% |
| Volatility | | | | | | | 153.63 | 1.60% | 1.60% | | | | | | |
| BuyWrite**** | | | | | | | 15.92 | 7.35% | 7.35% | | | | | | |
| IPO 3 month | | | | 3606.66 | 4.52% | 4.52% | | | | | | | | | |
| IPO 12 month | | | | 2847.04 | 4.29% | 8.57% | | | | | | | | | |
| IPO 60 month | | | | 2171.31 | 4.29% | 4.29% | | | | | | | | | |

Yellow background = Regional best performing sector

Blue background = Regional worst performing sector

* **Blue-Chip indices:** EUROPE: DJ STOXX 50; EUROZONE: DJ EURO STOXX 50; GLOBAL: DJ GLOBAL TITANS 50; AMERICAS: DJ INDUSTRIAL AVERAGE; ASIA/PACIFIC: DJ ASIAN TITANS 50

** **Benchmark indices:** EUROPE: DJ STOXX 600; EUROZONE: DJ EURO STOXX; GLOBAL: DJ STOXX GLOBAL 1800; AMERICAS: DJ STOXX AMERICAS 600; ASIA/PACIFIC: DJ STOXX ASIA/PACIFIC 600

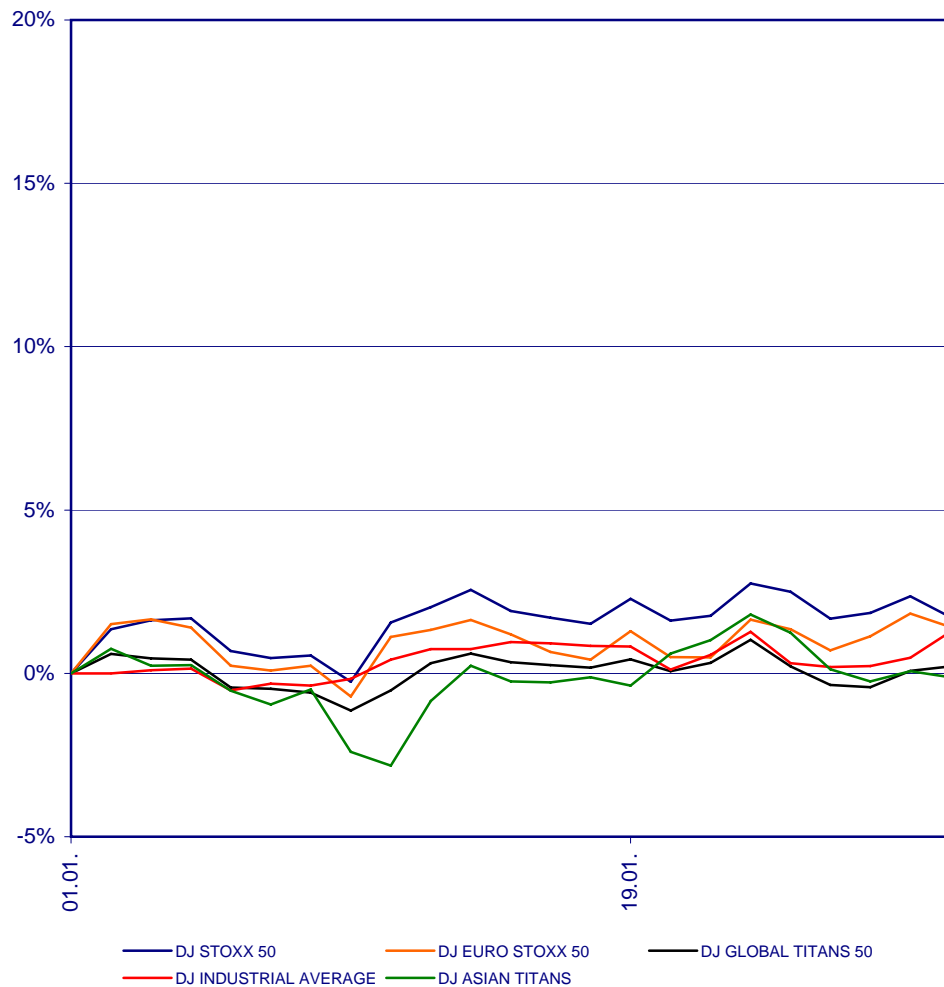
*** in USD

**** BuyWrite indices based on DJ EURO STOXX 50

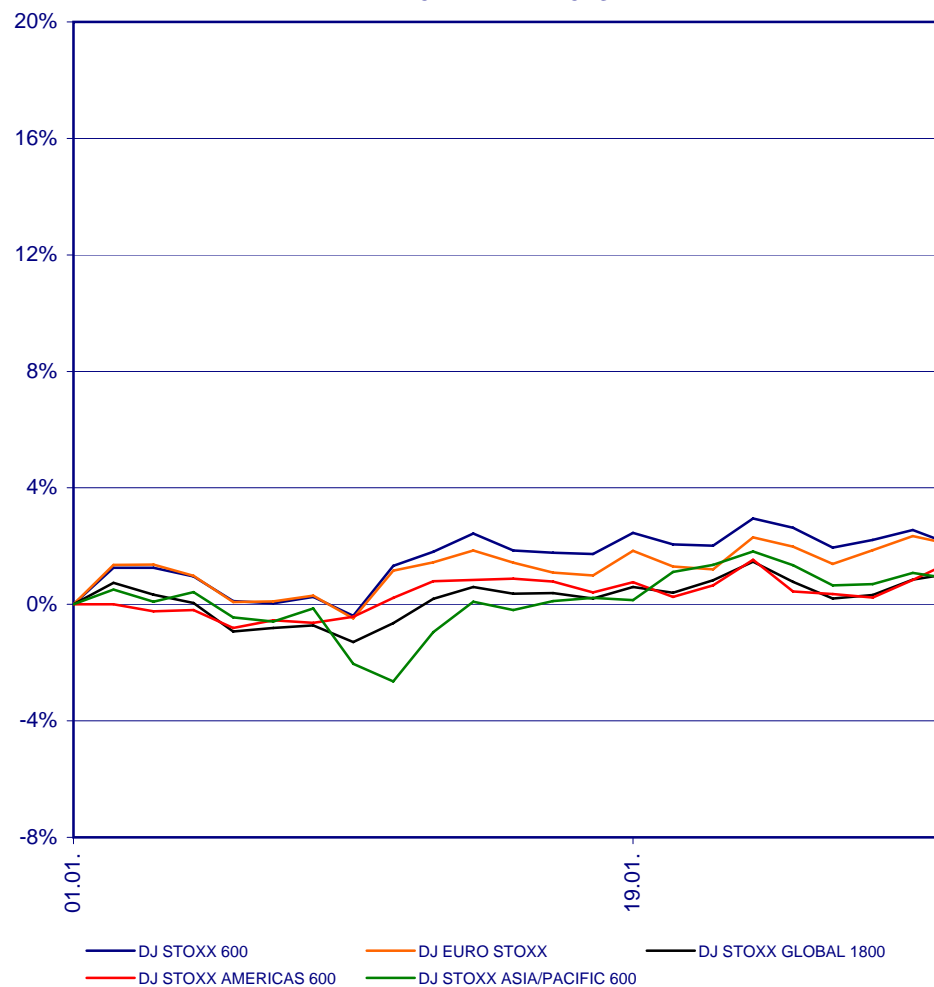
GLOBAL & REGIONAL INDICES – BLUE-CHIP AND BENCHMARK YEAR TO DATE PERFORMANCE CHARTS



BLUE-CHIP INDICES



BENCHMARK INDICES

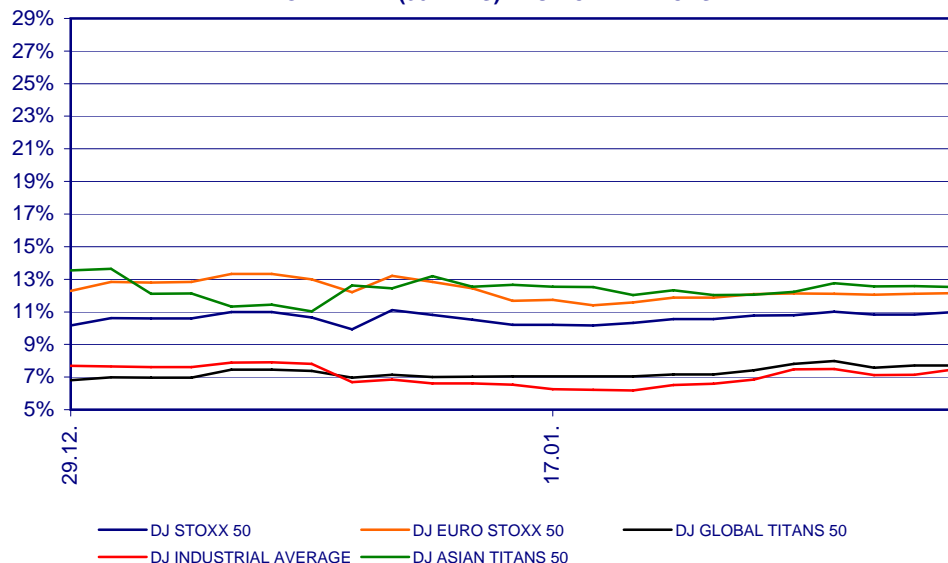


GLOBAL & REGIONAL INDICES – BLUE-CHIP AND BENCHMARK VOLATILITY AND CORRELATION

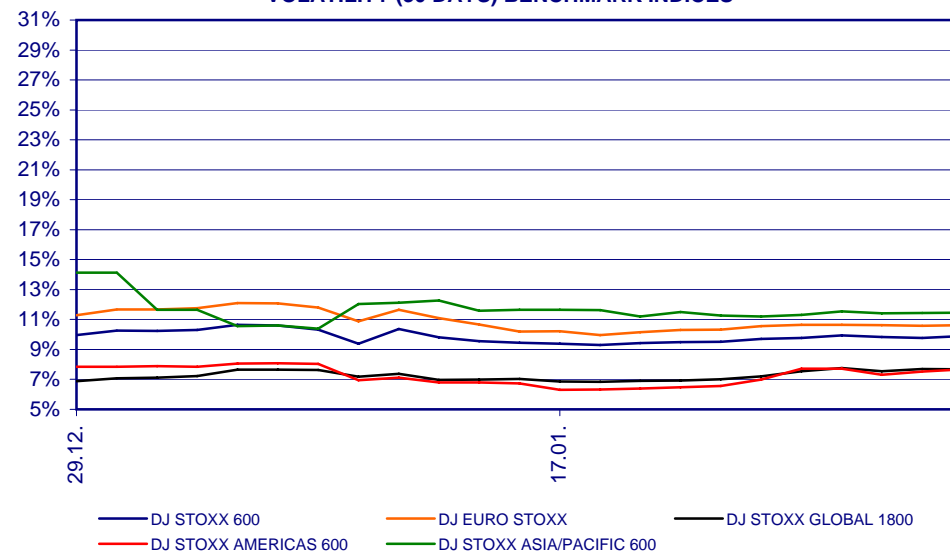


| | DJ STOXX 50 | DJ EURO STOXX 50 | DJ GLOBAL TITANS 50 | DJ INDUSTRIAL AVERAGE | DJ ASIAN TITANS 50 | DJ STOXX 600 | DJ EURO STOXX | DJ STOXX GLOBAL 1800 | DJ STOXX AMERICAS 600 | DJ STOXX ASIA/PACIFIC 600 |
|---------------------------------|-------------|------------------|---------------------|-----------------------|--------------------|--------------|---------------|----------------------|-----------------------|---------------------------|
| % Volatility (30 days) | 0.11 | 0.12 | 0.08 | 0.07 | 0.13 | 0.10 | 0.11 | 0.08 | 0.08 | 0.11 |
| Correlation (30 days) | | | | | | | | | | |
| DJ STOXX 50 | 1.0000 | | | | | | | | | |
| DJ EURO STOXX 50 | 0.9666 | 1.0000 | | | | | | | | |
| DJ GLOBAL TITANS 50 (USD) | 0.8009 | 0.8003 | 1.0000 | | | | | | | |
| DJ INDUSTRIAL AVERAGE (USD) | 0.4981 | 0.5598 | 0.7989 | 1.0000 | | | | | | |
| DJ ASIAN TITANS 50 (USD) | 0.4630 | 0.4200 | 0.5658 | 0.1511 | 1.0000 | | | | | |
| DJ STOXX 600 | 0.9807 | 0.9609 | 0.7863 | 0.4705 | 0.4951 | 1.0000 | | | | |
| DJ EURO STOXX | 0.9538 | 0.9905 | 0.7880 | 0.5331 | 0.4540 | 0.9721 | 1.0000 | | | |
| DJ STOXX GLOBAL 1800 (USD) | 0.8013 | 0.8167 | 0.9528 | 0.7084 | 0.6495 | 0.8208 | 0.8261 | 1.0000 | | |
| DJ STOXX AMERICAS 600 (USD) | 0.5474 | 0.5874 | 0.8450 | 0.9401 | 0.2260 | 0.5287 | 0.5681 | 0.7832 | 1.0000 | |
| DJ STOXX ASIA/PACIFIC 600 (USD) | 0.4141 | 0.3774 | 0.5038 | 0.1069 | 0.9705 | 0.4421 | 0.4086 | 0.5990 | 0.1795 | 1.0000 |

VOLATILITY (30 DAYS) BLUE-CHIP INDICES



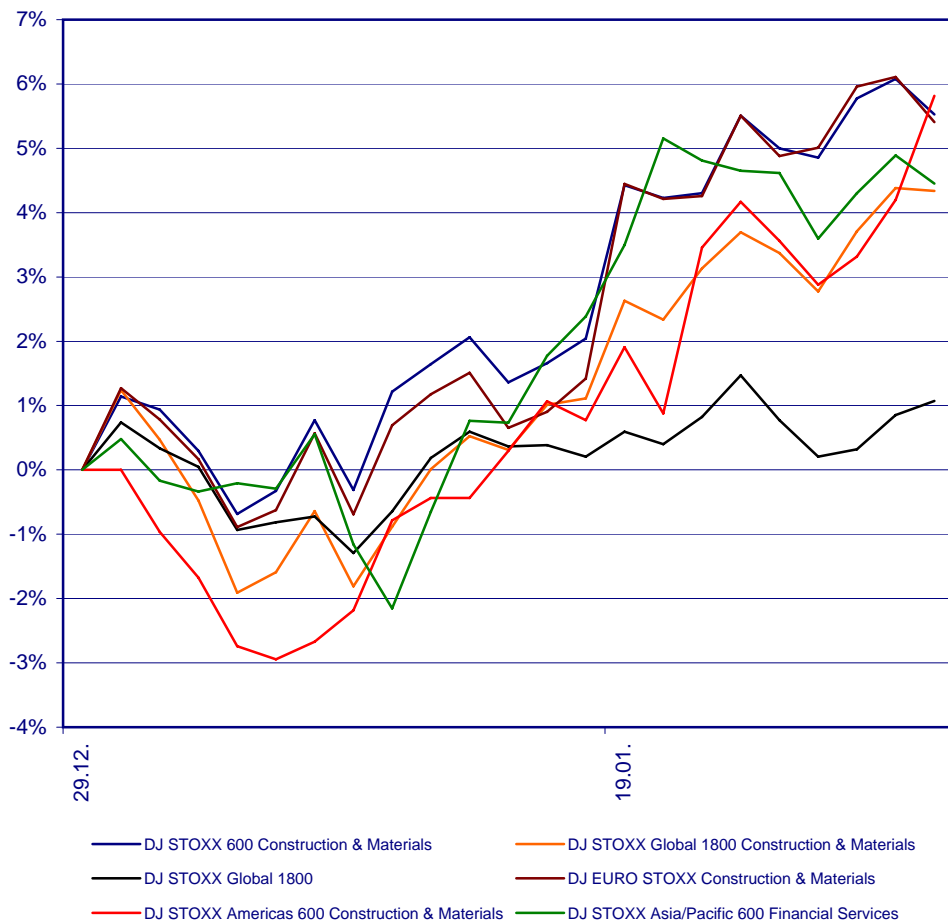
VOLATILITY (30 DAYS) BENCHMARK INDICES



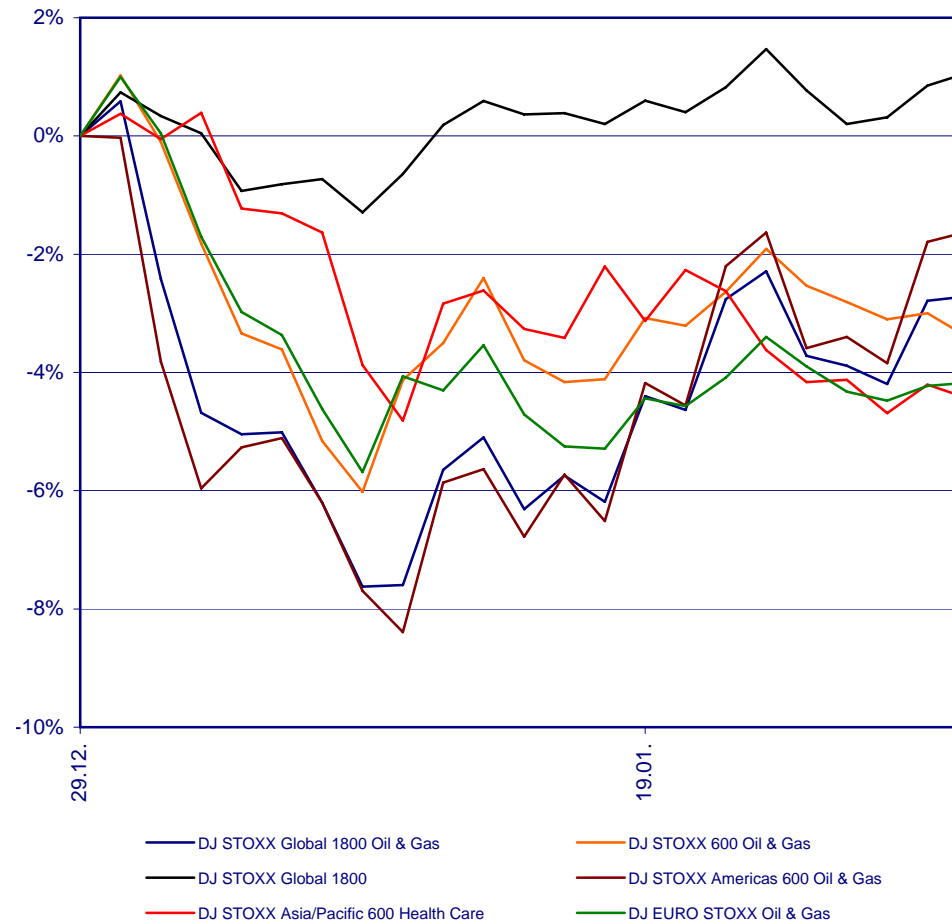
GLOBAL & REGIONAL SUPERSECTOR INDICES — YEAR TO DATE PERFORMANCE CHARTS



YEAR TO DATE BEST PERFORMING SUPERSECTORS



YEAR TO DATE WORST PERFORMING SUPERSECTORS

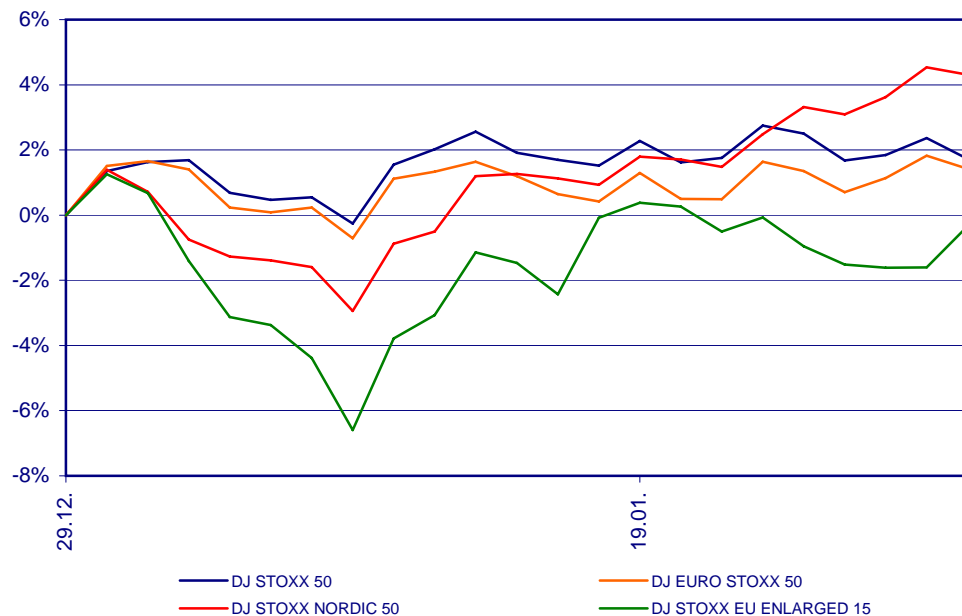


EUROPEAN INDICES – PERFORMANCE, VOLATILITY AND CORRELATION

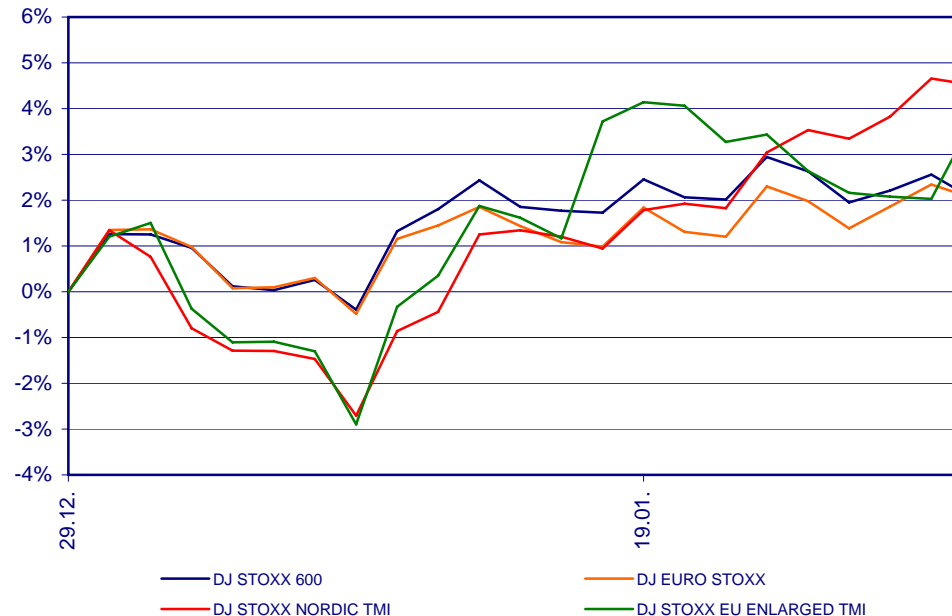


| | PERFORMANCE/VOLATILITY | | | | CORRELATION | | | | | | | |
|--------------------------|------------------------|--------------|------------|----------------------|-------------|--------------|------------------|---------------|--------------------|---------------------|-------------------------|--------------------------|
| | Index level | Change month | Change YTD | Volatility (30 days) | DJ STOXX 50 | DJ STOXX 600 | DJ EURO STOXX 50 | DJ EURO STOXX | DJ STOXX NORDIC 30 | DJ STOXX NORDIC TMI | DJ STOXX EU ENLARGED 15 | DJ STOXX EU ENLARGED TMI |
| DJ STOXX 50 | 3760.90 | 1.72% | 1.72% | 10.98% | 1.0000 | | | | | | | |
| DJ STOXX 600 | 372.72 | 2.04% | 2.04% | 9.91% | 0.9807 | 1.0000 | | | | | | |
| DJ EURO STOXX 50 | 4178.54 | 1.42% | 1.42% | 12.14% | 0.9666 | 0.9609 | 1.0000 | | | | | |
| DJ EURO STOXX | 403.74 | 2.05% | 2.05% | 10.63% | 0.9538 | 0.9721 | 0.9905 | 1.0000 | | | | |
| DJ STOXX NORDIC 30 | 8456.76 | 4.31% | 4.31% | 12.96% | 0.7273 | 0.7883 | 0.7404 | 0.7724 | 1.0000 | | | |
| DJ STOXX NORDIC TMI | 565.45 | 4.52% | 4.52% | 12.45% | 0.7223 | 0.7926 | 0.7447 | 0.7843 | 0.9898 | 1.0000 | | |
| DJ STOXX EU ENLARGED 15 | 3172.20 | -0.33% | -0.33% | 21.84% | 0.6119 | 0.6847 | 0.6394 | 0.6899 | 0.7439 | 0.7520 | 1.0000 | |
| DJ STOXX EU ENLARGED TMI | 324.77 | 3.73% | 3.73% | 18.25% | 0.5447 | 0.6195 | 0.5664 | 0.6203 | 0.6512 | 0.6563 | 0.9684 | 1.0000 |

YEAR TO DATE PERFORMANCE EUROPEAN BLUE-CHIP INDICES

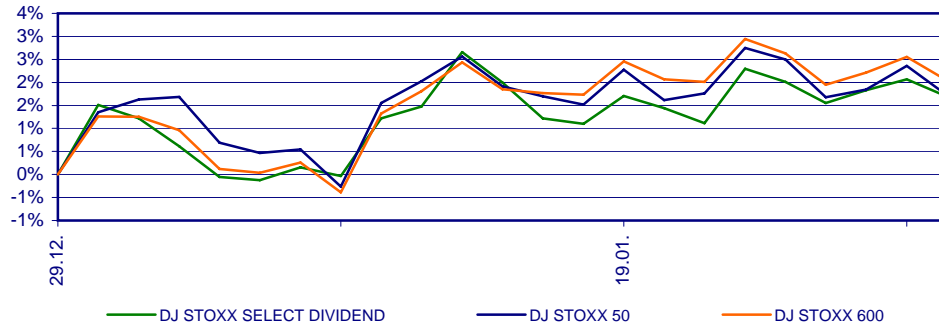


YEAR TO DATE PERFORMANCE EUROPEAN BENCHMARK INDICES

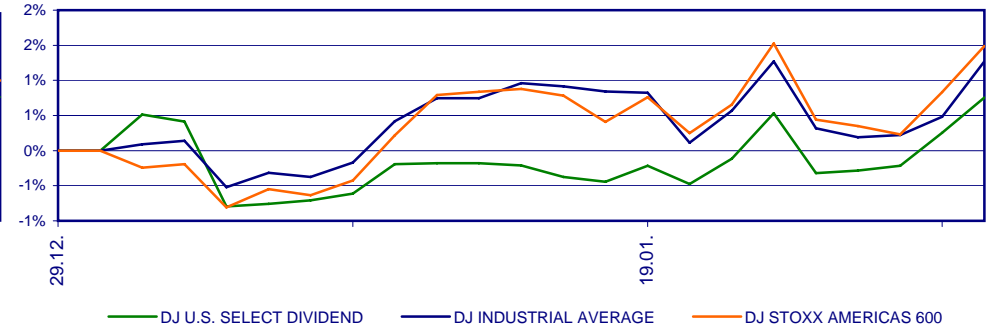


REGIONAL SELECT DIVIDEND INDICES – PERFORMANCE, VOLATILITY AND CORRELATION

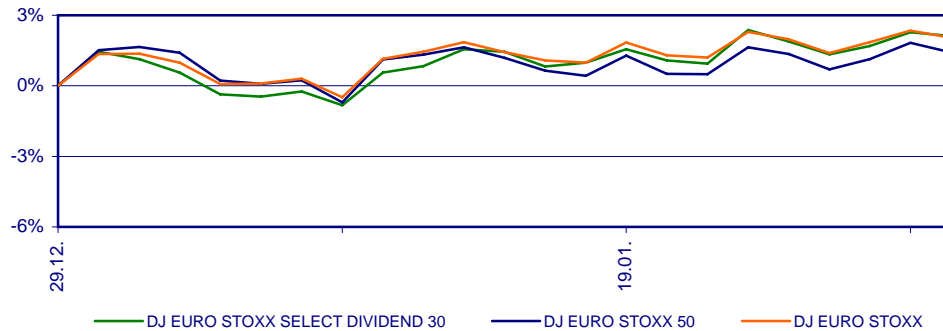
YEAR TO DATE PERFORMANCE EUROPE



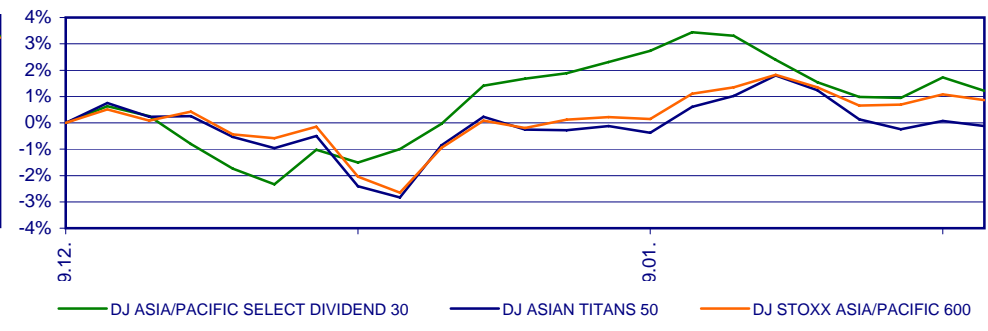
YEAR TO DATE PERFORMANCE AMERICAS



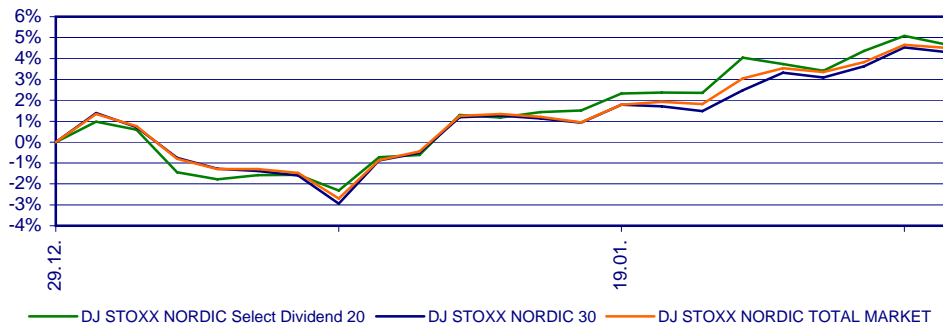
YEAR TO DATE PERFORMANCE EUROZONE



YEAR TO DATE PERFORMANCE ASIA/PACIFIC



YEAR TO DATE PERFORMANCE NORDIC



REGIONAL SELECT DIVIDEND INDICES — CORRELATION



| | | CORRELATION | | | | | | | | | | | | | | |
|------------------|---------------------------------|----------------------------------|-------------------|--------------------|--|---------------------------|---------------------|--|-----------------------------|------------------------------|------------------------------------|---|--|---|--------------------------------------|---|
| | | DJ STOXX SELECT DIV. 30 | DJ STOXX 50 | DJ STOXX 600 | DJ EURO STOXX SELECT DIV. 30 | DJ EURO STOXX 50 | DJ EURO STOXX | DJ STOXX NORDIC SELECT DIV. 20 | DJ STOXX NORDIC 30 | DJ STOXX TMI NORDIC | DJ U.S. SELECT DIV. (USD) | DJ INDU- STRIAL AVERAG E (USD) | DJ STOXX AMERIC AS 600 (USD) | DJ ASIA/ PACIFIC SELECT DIV. 30 (USD) | DJ ASIAN TITANS 50 (USD) | DJ STOXX ASIA/ PACIFIC 600 (USD) |
| Europe | DJ STOXX SELECT DIV. 30 | 1.0000 | | | | | | | | | | | | | | |
| | DJ STOXX 50 | 0.8378 | 1.0000 | | | | | | | | | | | | | |
| | DJ STOXX 600 | 0.8899 | 0.9807 | 1.0000 | | | | | | | | | | | | |
| Eurozone | DJ EURO STOXX SELECT DIV. 30 | 0.9237 | 0.8790 | 0.9184 | 1.0000 | | | | | | | | | | | |
| | DJ EURO STOXX 50 | 0.8491 | 0.9666 | 0.9609 | 0.9395 | 1.0000 | | | | | | | | | | |
| | DJ EURO STOXX | 0.8760 | 0.9538 | 0.9721 | 0.9583 | 0.9905 | 1.0000 | | | | | | | | | |
| Nordic | DJ STOXX NORDIC SELECT DIV. 20 | 0.8082 | 0.6533 | 0.7425 | 0.7562 | 0.6584 | 0.7119 | 1.0000 | | | | | | | | |
| | DJ STOXX NORDIC 30 | 0.7911 | 0.7273 | 0.7883 | 0.7774 | 0.7404 | 0.7724 | 0.8805 | 1.0000 | | | | | | | |
| | DJ STOXX TMI NORDIC | 0.8175 | 0.7223 | 0.7926 | 0.8072 | 0.7447 | 0.7843 | 0.9151 | 0.9898 | 1.0000 | | | | | | |
| Americas | DJ U.S. SELECT DIV.* | 0.4097 | 0.5466 | 0.5094 | 0.5469 | 0.6046 | 0.5587 | 0.2760 | 0.1700 | 0.2192 | 1.0000 | | | | | |
| | DJ INDUSTRIAL AVERAGE* | 0.3415 | 0.4981 | 0.4705 | 0.5351 | 0.5598 | 0.5331 | 0.2066 | 0.1234 | 0.1694 | 0.8754 | 1.0000 | | | | |
| | DJ STOXX AMERICAS 600* | 0.4218 | 0.5474 | 0.5287 | 0.5679 | 0.5874 | 0.5681 | 0.2980 | 0.2174 | 0.2689 | 0.8315 | 0.9401 | 1.0000 | | | |
| Asia/ Pacific | DJ ASIA/PACIFIC SELECT DIV. 30* | 0.4940 | 0.3379 | 0.4260 | 0.4328 | 0.3129 | 0.3551 | 0.5313 | 0.4551 | 0.4826 | 0.1296 | 0.0240 | 0.0935 | 1.0000 | | |
| | DJ ASIAN TITANS 50* | 0.4844 | 0.4630 | 0.4951 | 0.5099 | 0.4200 | 0.4540 | 0.4296 | 0.4406 | 0.4926 | 0.1939 | 0.1511 | 0.2260 | 0.5832 | 1.0000 | |
| | DJ STOXX ASIA/PACIFIC 600* | 0.4198 | 0.4141 | 0.4421 | 0.4467 | 0.3774 | 0.4086 | 0.3974 | 0.4040 | 0.4507 | 0.1850 | 0.1069 | 0.1795 | 0.5728 | 0.9705 | 1.0000 |

* in USD

REGIONAL SELECT DIVIDEND INDICES – PERFORMANCE, VOLATILITY

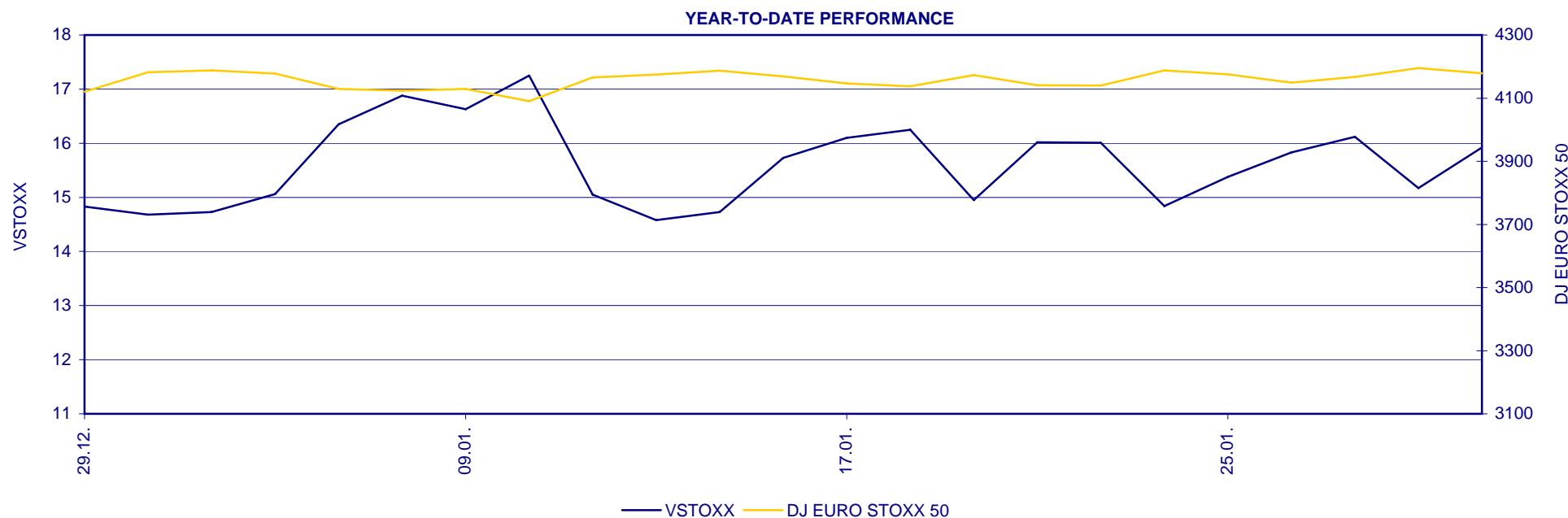


| | | PERFORMANCE/VOLATILITY | | | |
|------------------|--|------------------------|--------------|------------|------------------|
| | | Index level | Change month | Change YTD | Volatility (30d) |
| Europe | DJ STOXX SELECT DIVIDEND 30 | 3303.20 | 1.69% | 1.69% | 10.36% |
| | DJ STOXX 50 | 3760.90 | 1.72% | 1.72% | 10.98% |
| | DJ STOXX 600 | 372.72 | 2.04% | 2.04% | 9.91% |
| Eurozone | DJ EURO STOXX SELECT DIVIDEND 30 | 3336.64 | 2.11% | 2.11% | 10.94% |
| | DJ EURO STOXX 50 | 4178.54 | 1.42% | 1.42% | 12.14% |
| | DJ EURO STOXX | 403.74 | 2.05% | 2.05% | 10.63% |
| Nordic | DJ STOXX NORDIC SELECT DIVIDEND 20 | 3205.83 | 4.68% | 4.68% | 13.08% |
| | DJ STOXX NORDIC 30 | 8456.76 | 4.31% | 4.31% | 12.96% |
| | DJ STOXX TMI NORDIC | 565.45 | 4.52% | 4.52% | 12.45% |
| Americas | DJ U.S. SELECT DIVIDEND (USD) | 499.27 | 0.76% | 0.76% | 7.71% |
| | DJ INDUSTRIAL AVERAGE (USD) | 12621.69 | 1.27% | 1.27% | 7.48% |
| | DJ STOXX AMERICAS 600 (USD) | 339.69 | 1.49% | 1.49% | 7.66% |
| Asia/ Pacific | DJ ASIA/PACIFIC SELECT DIVIDEND 30 (USD) | 356.91 | 1.22% | 1.22% | 11.81% |
| | DJ ASIAN TITANS 50 (USD) | 164.23 | -0.12% | -0.12% | 12.52% |
| | DJ STOXX ASIA/PACIFIC 600 (USD) | 147.83 | 0.87% | 0.87% | 11.46% |

DJ EURO STOXX 50 VOLATILITY INDEX (VSTOXX) – HIGH, LOW, MEAN, CORRELATION AND SPREAD



| | INDEX LEVEL | MONTHLY HIGH | MONTHLY LOW | YTD HIGH | YTD LOW | 30 DAY CORRELATION TO DJ EURO STOXX 50 | SPREAD IMPLIED VS. REALISED VOLATILITY | 30 DAY REALISED VOLATILITY OF DJ EURO STOXX 50 |
|-----------------------|-------------|--------------|-------------|----------|---------|--|--|--|
| VSTOXX | 15.92 | 17.25 | 14.58 | 17.25 | 14.58 | -0.82 | 3.78 | 12.14 |
| Subindex 1, 1 Month | 16.05 | 19.39 | 13.58 | 19.39 | 13.58 | -0.47 | 3.91 | |
| Subindex 2, 2 Months | 15.87 | 17.25 | 14.62 | 17.25 | 14.62 | -0.84 | 3.73 | |
| Subindex 3, 3 Months | 15.56 | 17.59 | 15.04 | 17.59 | 15.04 | -0.75 | 3.42 | |
| Subindex 4, 6 Months | 16.49 | 18.24 | 16.29 | 18.24 | 16.29 | -0.72 | 4.35 | |
| Subindex 5, 9 Months | 17.17 | 18.51 | 17.05 | 18.51 | 17.05 | -0.69 | 5.03 | |
| Subindex 6, 12 Months | 17.47 | 18.66 | 17.41 | 18.66 | 17.41 | -0.78 | 5.33 | |
| Subindex 7, 18 Months | 18.01 | 19.05 | 18.01 | 19.05 | 18.01 | -0.61 | 5.87 | |
| Subindex 8, 24 Months | 18.51 | 19.43 | 18.46 | 19.43 | 18.46 | -0.62 | 6.37 | |



EUREX FUTURES & OPTIONS – VOLUME AND OPEN INTEREST

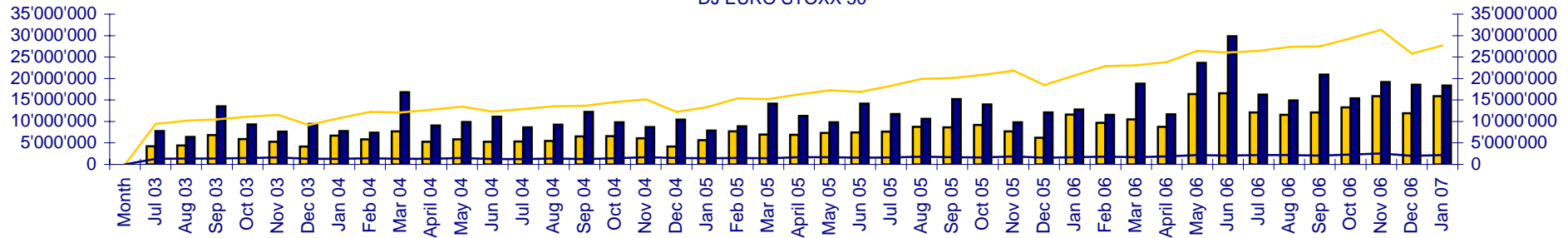


| | OPTIONS | | | | | | FUTURES | | | | | |
|----------------------------|-------------------|-------------------|-----------------|----------------|-------------------|------------------------|-------------------|-------------------|-----------------|----------------|------------------|-----------------------|
| | Traded contracts | | | | Open Interest | | Traded contracts | | | | Open Interest | |
| | Monthly | YTD | Monthly average | YTD average | Traded contracts | in EUR | Monthly | YTD | Monthly average | YTD average | Traded contracts | in EUR |
| DJ STOXX BLUE-CHIPS | | | | | | | | | | | | |
| DJ EURO STOXX 50 | 15'906'022 | 15'906'022 | 723'001 | 723'001 | 27'705'506 | 981'439'529'500 | 18'376'338 | 18'376'338 | 835'288 | 835'288 | 2'166'671 | 91'350'449'160 |
| DJ STOXX 50 | 977 | 977 | 44 | 44 | 12'134 | 444'115'000 | 52'312 | 52'312 | 2'378 | 2'378 | 66'573 | 2'515'206'700 |
| DJI BLUE-CHIPS | | | | | | | | | | | | |
| DJ GLOBAL TITANS 50 | 0 | 0 | 0 | 0 | 0 | 0 | 172 | 172 | 8 | 8 | 1'243 | 29'620'690 |
| DJ ITALY TITANS 30 | 0 | 0 | 0 | 0 | 0 | 0 | 0 | 0 | 0 | 0 | 0 | 0 |
| DJ STOXX BENCHMARK | | | | | | | | | | | | |
| DJ STOXX 600 | 11'344 | 11'344 | 516 | 516 | 11'146 | 801'906'000 | 277 | 277 | 13 | 13 | 736 | 55'271'520 |
| SUPERSECTORS | | | | | | | | | | | | |
| DJ EURO STOXX | 55'419 | 55'419 | 2'519 | 2'519 | 68'030 | 1'330'840'000 | 54'373 | 54'373 | 2'471 | 2'471 | 88'301 | 1'828'916'960 |
| DJ STOXX | 44'749 | 44'749 | 2'034 | 2'034 | 50'219 | 1'004'523'500 | 83'479 | 83'479 | 3'795 | 3'795 | 126'505 | 2'472'695'290 |
| DJ STOXX SIZE | | | | | | | | | | | | |
| DJ STOXX Mid 200 | 6'255 | 6'255 | 284 | 284 | 9'623 | 634'688'000 | 3'850 | 3'850 | 175 | 175 | 5'409 | 381'907'580 |
| ETFs | | | | | | | | | | | | |
| DJ EURO STOXX 50 EX | 15 | 15 | 1 | 1 | 12 | 50'600 | 650 | 650 | 30 | 30 | 670 | 2'848'170 |
| iShares DJ EURO STOXX 50 | 18 | 18 | 1 | 1 | 20 | 79'600 | 0 | 0 | 0 | 0 | 3 | 12'654 |
| Total | 16'024'799 | 16'024'799 | 728'400 | 728'400 | 27'856'690 | 985'655'732'200 | 18'571'451 | 18'571'451 | 844'157 | 844'157 | 2'456'111 | 98'636'928'724 |

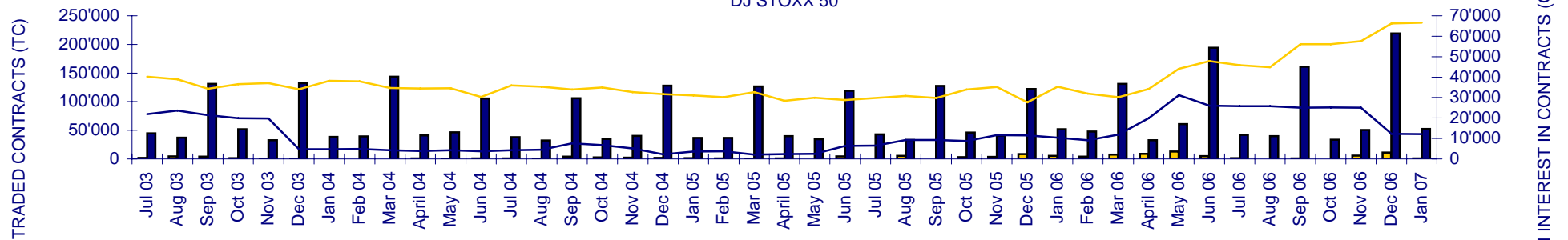
FUTURES & OPTIONS ON DJ STOXX BLUE-CHIP & SECTOR INDICES – DEVELOPMENT OF VOLUME AND OPEN INTEREST



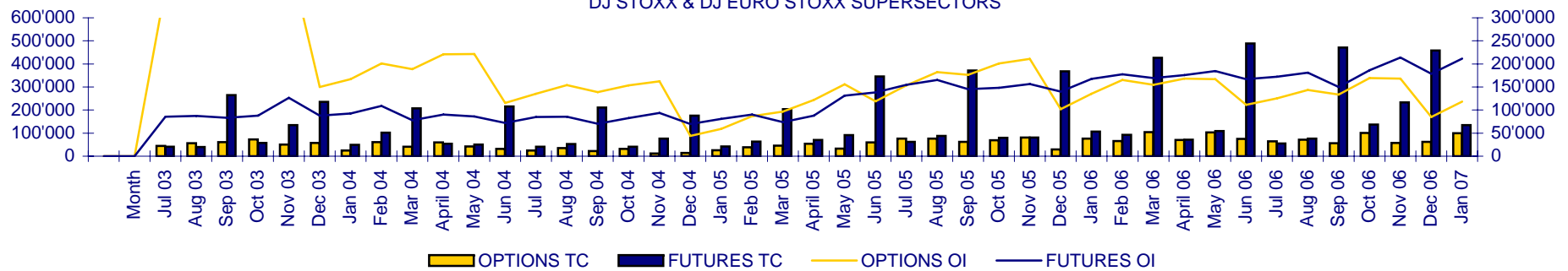
DJ EURO STOXX 50



DJ STOXX 50



DJ STOXX & DJ EURO STOXX SUPERSECTORS



OPTIONS TC
 FUTURES TC
 OPTIONS OI
 FUTURES OI

ETFs ON DJ STOXX SUPERSECTOR INDICES – ASSETS UNDER MANAGEMENT AND TURNOVER



| INDEX/PRODUCT NAME | MANAGER | | | | | | | | | | | | | | TURNOVER BY EXCHANGE (MEUR) | | | | | | | | | | | | Total Turnover (MEUR) | AUM (MEUR) | | | | | | | | | | | |
|---|-------------------------|---------------------------|------|----------------|-------------|---------------|------------------------|---------------------|----------------------|--------------------------|------------------------------|------------------------|--------------|--------------------|------------------------------|---------------------|----------------------|---------------|--------------|----------------|-----------------|--------------------|----------------|---------------|-------------------|-------------|-----------------------|------------|---------------|-----|---------------|--------------|-------------|--------|------|-------|-------|-------|-------|
| | AXA Investment Managers | Barclays Global Investors | BBVA | BMD Securities | BNP Paribas | Deutsche Bank | Dexia Asset Management | Finans Portfoy A.S. | First Trust Advisors | INDEXCHANGE Investment A | K.S.M. Financial Instruments | Lyxor Asset Management | PDR Services | Société Général AM | State Street Global Advisors | TD Asset Management | UBS Asset Management | American S.E. | Bolsa Madrid | Borsa Italiana | Deutsche Boerse | Euronext Amsterdam | Euronext Paris | Istanbul S.E. | Johannesburg S.E. | London S.E. | | | New York S.E. | SWX | Tel Aviv S.E. | Toronto S.E. | Vienna S.E. | virt-x | | | | | |
| DOW JONES STOXX SUPERSECTORS | | | | | | | | | | | | | | | | | | | | | | | | | | | | | | | | | | | | | | | |
| DJ STOXX 600 Automobiles & Parts | | | | | | | | | | | | | | | | | | | | | 4.7 | 1.8 | | | | | | | | | | | | | 6.6 | 48.6 | | | |
| DJ STOXX 600 Automobiles & Parts Swap | | | | | | | | | | | | | | | | | | | | | 1.8 | | | | | | | | | | | | | | | 1.8 | 24.9 | | |
| DJ STOXX 600 Banks | | | | | | | | | | | | | | | | | | | | 1.9 | 14.4 | 3.9 | | | | | | | | | | | | | 20.2 | 117.8 | | | |
| DJ STOXX 600 Banks Swap | | | | | | | | | | | | | | | | | | | | 0.2 | | | | | | | | | | | | | | | | 0.2 | 113.6 | | |
| DJ STOXX 600 Basic Resources | | | | | | | | | | | | | | | | | | | | 3.2 | 10.8 | 10.8 | | | | | | | | | | | | | | 24.8 | 162.4 | | |
| DJ STOXX 600 Basic Resources Swap | | | | | | | | | | | | | | | | | | | | 9.6 | | | | | | | | | | | | | | | | 9.6 | 123.9 | | |
| DJ STOXX 600 Chemicals | | | | | | | | | | | | | | | | | | | | 0.4 | n/a. | 1.1 | | | | | | | | | | | | | | 1.5 | 66.0 | | |
| DJ STOXX 600 Chemicals Swap | | | | | | | | | | | | | | | | | | | | 0.1 | | | | | | | | | | | | | | | | 0.1 | 13.0 | | |
| DJ STOXX 600 Construction & Materials | | | | | | | | | | | | | | | | | | | | 1.3 | n/a. | 5.8 | | | | | | | | | | | | | | 7.1 | 60.8 | | |
| DJ STOXX 600 Construction & Materials Swap | | | | | | | | | | | | | | | | | | | | 0.3 | | | | | | | | | | | | | | | | 0.3 | 12.3 | | |
| DJ STOXX 600 Financial Services | | | | | | | | | | | | | | | | | | | | 3.7 | 25.3 | 4.6 | | | | | | | | | | | | | | 33.6 | 113.8 | | |
| DJ STOXX 600 Financial Services Swap | | | | | | | | | | | | | | | | | | | | 2.2 | | | | | | | | | | | | | | | | | 2.2 | 22.6 | |
| DJ STOXX 600 Food & Beverage | | | | | | | | | | | | | | | | | | | | 0.5 | n/a. | 0.8 | | | | | | | | | | | | | | | 1.3 | 51.0 | |
| DJ STOXX 600 Food & Beverage Swap | | | | | | | | | | | | | | | | | | | | n/a. | | | | | | | | | | | | | | | | | 0.0 | 21.9 | |
| DJ STOXX 600 Healthcare | | | | | | | | | | | | | | | | | | | | 11.6 | n/a. | 10.6 | | | | | | | | | | | | | | | 22.2 | 273.8 | |
| DJ STOXX 600 Healthcare Swap | | | | | | | | | | | | | | | | | | | | 12.1 | | | | | | | | | | | | | | | | | 12.1 | 95.1 | |
| DJ STOXX 600 Industrial Goods & Services | | | | | | | | | | | | | | | | | | | | 1.0 | n/a. | 2.2 | | | | | | | | | | | | | | | 3.2 | 78.6 | |
| DJ STOXX 600 Industrial Goods & Services Swap | | | | | | | | | | | | | | | | | | | | n/a. | | | | | | | | | | | | | | | | | 0.0 | 22.9 | |
| DJ STOXX 600 Insurance | | | | | | | | | | | | | | | | | | | | 7.2 | 23.1 | 2.7 | | | | | | | | | | | | | | | 33.0 | 149.2 | |
| DJ STOXX 600 Insurance Swap | | | | | | | | | | | | | | | | | | | | 0.1 | | | | | | | | | | | | | | | | | | 0.1 | 137.8 |
| DJ STOXX 600 Media | | | | | | | | | | | | | | | | | | | | 1.1 | 9.4 | 0.3 | | | | | | | | | | | | | | | 10.8 | 72.7 | |
| DJ STOXX 600 Media Swap | | | | | | | | | | | | | | | | | | | | 29.8 | | | | | | | | | | | | | | | | | 29.8 | 37.5 | |
| DJ STOXX 600 Oil & Gas | | | | | | | | | | | | | | | | | | | | 65.5 | | | | | | | | | | | | | | | | | 65.5 | 241.9 | |
| DJ STOXX 600 Oil & Gas Swap | | | | | | | | | | | | | | | | | | | | 1.0 | | | | | | | | | | | | | | | | | 1.0 | 170.1 | |
| DJ STOXX 600 Personal & Household Goods | | | | | | | | | | | | | | | | | | | | 0.7 | n/a. | 2.0 | | | | | | | | | | | | | | | 2.7 | 46.9 | |
| DJ STOXX 600 Personal & Household Goods Swap | | | | | | | | | | | | | | | | | | | | n/a. | | | | | | | | | | | | | | | | | | 0.0 | 11.8 |
| DJ STOXX 600 Retail | | | | | | | | | | | | | | | | | | | | 0.2 | n/a. | 0.9 | | | | | | | | | | | | | | | | 1.1 | 62.5 |
| DJ STOXX 600 Retail Swap | | | | | | | | | | | | | | | | | | | | 0.1 | | | | | | | | | | | | | | | | | | 0.1 | 64.8 |

ETFs ON DJ EURO STOXX SUPERSECTOR INDICES – ASSETS UNDER MANAGEMENT AND TURNOVER



| INDEX/PRODUCT NAME | MANAGER | | | | | | | | | | | | | | | TURNOVER BY EXCHANGE (MEUR) | | | | | | | | | | | | Total Turnover (MEUR) | AUM (MEUR) | | | | | | | | | | | | | | | | | | | | | | | | | | | | | | | | | | | |
|---|-------------------------|---------------------------|------|----------------|-------------|---------------|------------------------|---------------------|----------------------|---------------------------|------------------------------|------------------------|--------------|---------------------|------------------------------|-----------------------------|----------------------|---------------|--------------|----------------|-----------------|--------------------|----------------|---------------|-------------------|-------------|---------------|-----------------------|------------|-----|---------------|--------------|-------------|--------|------|-------|-------|-------|--|--|--|--|--|--|--|--|--|--|--|--|--|--|--|--|--|--|--|--|--|--|--|--------------|----------------|----------------|
| | AXA Investment Managers | Barclays Global Investors | BBVA | BMD Securities | BNP Paribas | Deutsche Bank | Dexia Asset Management | Finans Portfoy A.S. | First Trust Advisors | INDEXCHANGE Investment AG | K.S.M. Financial Instruments | Lyxor Asset Management | PDR Services | Société Générale AM | State Street Global Advisors | TD Asset Management | UBS Asset Management | American S.E. | Bolsa Madrid | Borsa Italiana | Deutsche Boerse | Euronext Amsterdam | Euronext Paris | Istanbul S.E. | Johannesburg S.E. | London S.E. | New York S.E. | | | SWX | Tel Aviv S.E. | Toronto S.E. | Vienna S.E. | virt-x | | | | | | | | | | | | | | | | | | | | | | | | | | | | | | |
| DOW JONES STOXX SUPERSECTORS (contd.) | | | | | | | | | | | | | | | | | | | | | | | | | | | | | | | | | | | | | | | | | | | | | | | | | | | | | | | | | | | | | | | | |
| DJ STOXX 600 Technology | | | | | | | | | | | | | | | | | | | | 2.5 | 27.1 | 13.6 | | | | | | | | | | | | | 43.2 | 148.9 | | | | | | | | | | | | | | | | | | | | | | | | | | | | |
| DJ STOXX 600 Technology Swap | | | | | | | | | | | | | | | | | | | | | | 0.1 | | | | | | | | | | | | | | 0.1 | 80.9 | | | | | | | | | | | | | | | | | | | | | | | | | | | |
| DJ STOXX 600 Telecommunications | | | | | | | | | | | | | | | | | | | | 6.0 | n/a. | 8.9 | | | | | | | | | | | | | | 15.0 | 184.0 | | | | | | | | | | | | | | | | | | | | | | | | | | | |
| DJ STOXX 600 Telecommunications Swap | | | | | | | | | | | | | | | | | | | | | 7.1 | | | | | | | | | | | | | | | 7.1 | 90.5 | | | | | | | | | | | | | | | | | | | | | | | | | | | |
| DJ STOXX 600 Travel & Leisure | | | | | | | | | | | | | | | | | | | | 0.8 | n/a. | 7.7 | | | | | | | | | | | | | | 8.6 | 49.3 | | | | | | | | | | | | | | | | | | | | | | | | | | | |
| DJ STOXX 600 Travel & Leisure Swap | | | | | | | | | | | | | | | | | | | | | 1.0 | | | | | | | | | | | | | | | 1.0 | 12.2 | | | | | | | | | | | | | | | | | | | | | | | | | | | |
| DJ STOXX 600 Utilities | | | | | | | | | | | | | | | | | | | | 13.3 | 38.0 | 6.4 | | | | | | | | | | | | | | 57.8 | 115.0 | | | | | | | | | | | | | | | | | | | | | | | | | | | |
| DJ STOXX 600 Utilities Swap | | | | | | | | | | | | | | | | | | | | | 0.2 | | | | | | | | | | | | | | | 0.2 | 114.1 | | | | | | | | | | | | | | | | | | | | | | | | | | | |
| SUM DOW JONES STOXX SUPERSECTORS | | | | | | | | | | | | | | | | | | | | | | | | | | | | | | | | | | | | | | | | | | | | | | | | | | | | | | | | | | | | | | 423.6 | 3'213.0 | |
| DOW JONES EURO STOXX SUPERSECTORS | | | | | | | | | | | | | | | | | | | | | | | | | | | | | | | | | | | | | | | | | | | | | | | | | | | | | | | | | | | | | | | | |
| DJ EURO STOXX Auto (Axa EasyETF) | | | | | | | | | | | | | | | | | | | | | | | | | | | | | | | | | | | | | 0.1 | 61.4 | | | | | | | | | | | | | | | | | | | | | | | | | | |
| DJ EURO STOXX Banks (Axa EasyETF) | | | | | | | | | | | | | | | | | | | | | | | | | | | | | | | | | | | | | 12.6 | 135.3 | | | | | | | | | | | | | | | | | | | | | | | | | | |
| DJ EURO STOXX Banks (IndexChange) | | | | | | | | | | | | | | | | | | | | | 3.7 | | | | | | | | | | | | | | | 3.7 | 66.3 | | | | | | | | | | | | | | | | | | | | | | | | | | | |
| DJ EURO STOXX Construction (Axa EasyETF) | | | | | | | | | | | | | | | | | | | | | | | | | | | | | | | | | | | | | 3.2 | 10.6 | | | | | | | | | | | | | | | | | | | | | | | | | | |
| DJ EURO STOXX Healthcare (Axa EasyETF) | | | | | | | | | | | | | | | | | | | | | | | | | | | | | | | | | | | | | 9.2 | 40.2 | | | | | | | | | | | | | | | | | | | | | | | | | | |
| DJ EURO STOXX Healthcare (IndexChange) | | | | | | | | | | | | | | | | | | | | | 4.6 | | | | | | | | | | | | | | | | 4.6 | 9.9 | | | | | | | | | | | | | | | | | | | | | | | | | | |
| DJ EURO STOXX Insurance (Axa EasyETF) | | | | | | | | | | | | | | | | | | | | | | | | | | | | | | | | | | | | | 5.6 | 86.4 | | | | | | | | | | | | | | | | | | | | | | | | | | |
| DJ EURO STOXX Media (Axa EasyETF) | | | | | | | | | | | | | | | | | | | | | | | | | | | | | | | | | | | | | 5.5 | 19.2 | | | | | | | | | | | | | | | | | | | | | | | | | | |
| DJ EURO STOXX Oil & Gas (Axa EasyETF) | | | | | | | | | | | | | | | | | | | | | | | | | | | | | | | | | | | | | 17.3 | 50.9 | | | | | | | | | | | | | | | | | | | | | | | | | | |
| DJ EURO STOXX Technology (Axa EasyETF) | | | | | | | | | | | | | | | | | | | | | | | | | | | | | | | | | | | | | 7.1 | 74.3 | | | | | | | | | | | | | | | | | | | | | | | | | | |
| DJ EURO STOXX Technology (IndexChange) | | | | | | | | | | | | | | | | | | | | | 2.9 | | | | | | | | | | | | | | | | 2.9 | 26.5 | | | | | | | | | | | | | | | | | | | | | | | | | | |
| DJ EURO STOXX Telecommunication (Axa EasyETF) | | | | | | | | | | | | | | | | | | | | | | | | | | | | | | | | | | | | | 4.0 | 102.5 | | | | | | | | | | | | | | | | | | | | | | | | | | |
| DJ EURO STOXX Telecommunication (IndexChange) | | | | | | | | | | | | | | | | | | | | | 10.8 | | | | | | | | | | | | | | | | 10.8 | 103.3 | | | | | | | | | | | | | | | | | | | | | | | | | | |
| DJ EURO STOXX Utility (Axa EasyETF) | | | | | | | | | | | | | | | | | | | | | | | | | | | | | | | | | | | | | 8.5 | 78.6 | | | | | | | | | | | | | | | | | | | | | | | | | | |
| SUM DOW JONES EURO STOXX SUPERSECTORS | | | | | | | | | | | | | | | | | | | | | | | | | | | | | | | | | | | | | | | | | | | | | | | | | | | | | | | | | | | | | | | 95.1 | 865.5 |
| TOTAL DOW JONES SUPERSECTORS | | | | | | | | | | | | | | | | | | | | | | | | | | | | | | | | | | | | | | | | | | | | | | | | | | | | | | | | | | | | | | | 518.7 | 4'078.4 |

ETFs ON DJ STOXX ON BROAD, SIZE, STYLE & SPECIALTY INDICES – ASSETS UNDER MANAGEMENT AND TURNOVER



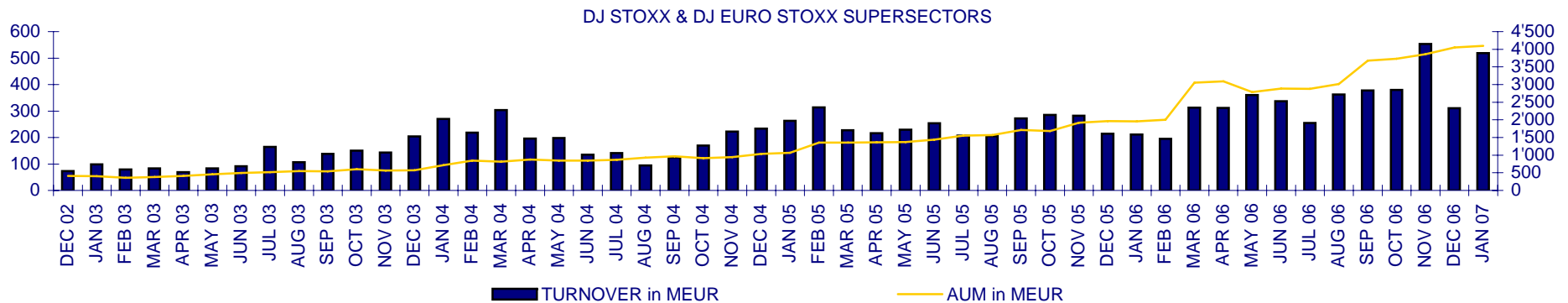
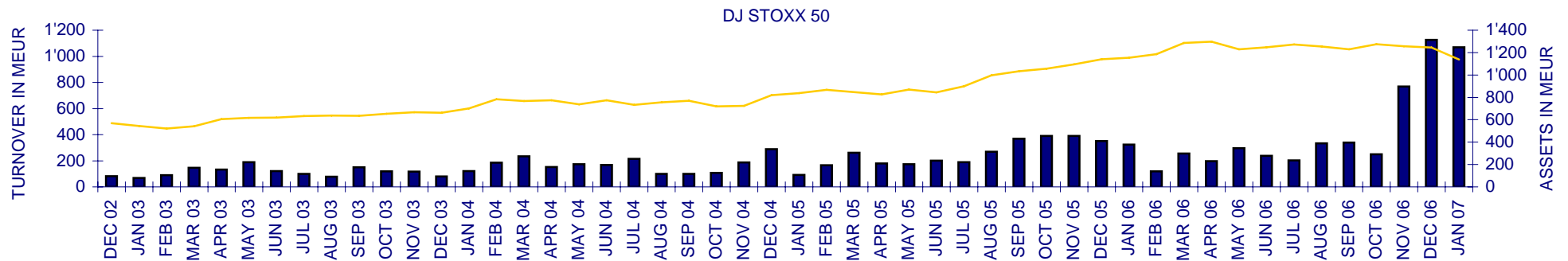
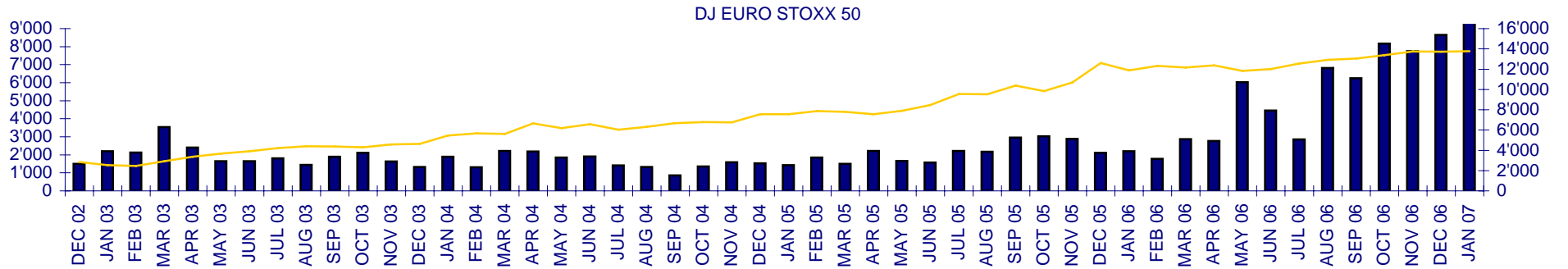
| INDEX/PRODUCT NAME | MANAGER | | | | | | | | | | | | | | TURNOVER BY EXCHANGE (MEUR) | | | | | | | | | | | | Total Turnover (MEUR) | AUM (MEUR) | | | | | | | | | |
|---|-------------------------|---------------------------|------|----------------|-------------|---------------|------------------------|---------------------|----------------------|---------------------------|------------------------------|------------------------|--------------|---------------------|------------------------------|---------------------|----------------------|---------------|--------------|----------------|-----------------|--------------------|----------------|---------------|-------------------|-------------|-----------------------|------------|---------------|-----|---------------|--------------|-----------------|-----------------|-------|-------|-------|
| | AXA Investment Managers | Barclays Global Investors | BBVA | BMD Securities | BNP Paribas | Deutsche Bank | Dexia Asset Management | Finans Portfey A.S. | First Trust Advisors | INDEXCHANGE Investment AG | K.S.M. Financial Instruments | Lyxor Asset Management | PDR Services | Société Générale AM | State Street Global Advisors | TD Asset Management | UBS Asset Management | American S.E. | Bolsa Madrid | Borsa Italiana | Deutsche Boerse | Euronext Amsterdam | Euronext Paris | Istanbul S.E. | Johannesburg S.E. | London S.E. | | | New York S.E. | SWX | Tel Aviv S.E. | Toronto S.E. | Vienna S.E. | virt-x | | | |
| Dow JONES STOXX SECTOR INDICES | | | | | | | | | | | | | | | | | | | | | | | | | | | | | | | | | | | | | |
| DJ STOXX 600 Real Estate (IndexChange) | | | | | | | | | | | | | | | | | | | | | 2.3 | | | | | | | | | | | | | | | 2.3 | 8.7 |
| DJ STOXX Americas 600 Real Estate (IndexChange) | | | | | | | | | | | | | | | | | | | | | 0.4 | | | | | | | | | | | | | | | 0.4 | 0.6 |
| DJ STOXX Asia Pacific 600 Real Estate (IndexChange) | | | | | | | | | | | | | | | | | | | | | 4.2 | | | | | | | | | | | | | | | 4.2 | 9.2 |
| Dow JONES STOXX SECTOR INDICES | | | | | | | | | | | | | | | | | | | | | | | | | | | | | | | | | 6.9 | 18.6 | | | |
| DOW JONES STOXX BROAD, SIZE AND STYLE | | | | | | | | | | | | | | | | | | | | | | | | | | | | | | | | | | | | | |
| DJ STOXX 600 (IndexChange) | | | | | | | | | | | | | | | | | | | | | 52.8 | | | | | | | | | | | | | | 52.8 | 463.1 | |
| DJ EURO STOXX (IndexChange) | | | | | | | | | | | | | | | | | | | | | 8.1 | | | | | | | | | | | | | | | 8.1 | 103.2 |
| DJ EURO STOXX (BNP EasyETF) | | | | | | | | | | | | | | | | | | | | 1.4 | | | 30.7 | | | | | | | | | | | | 32.0 | 84.4 | |
| DJ STOXX Large 200 (IndexChange) | | | | | | | | | | | | | | | | | | | | | 7.1 | | | | | | | | | | | | | | | 7.1 | 43.3 |
| DJ STOXX Mid 200 (IndexChange) | | | | | | | | | | | | | | | | | | | | | 13.1 | | | | | | | | | | | | | | | 13.1 | 238.3 |
| DJ STOXX Small 200 (IndexChange) | | | | | | | | | | | | | | | | | | | | | 7.0 | | | | | | | | | | | | | | | 7.0 | 45.8 |
| DJ EURO STOXX Mid (iShares) | | | | | | | | | | | | | | | | | | | | 16.1 | 12.6 | 5.9 | 6.1 | | | 421.7 | 0.3 | | | | | | 3.3 | 465.9 | 173.0 | | |
| DJ EURO STOXX Small (iShares) | | | | | | | | | | | | | | | | | | | | 12.8 | 7.5 | 4.3 | 2.2 | | | 1'315.9 | 0.8 | | | | | | 2.2 | 1'345.7 | 199.2 | | |
| DJ EURO STOXX Growth (iShares) | | | | | | | | | | | | | | | | | | | | 1.6 | 3.0 | 0.9 | 2.6 | | | 593.8 | 0.2 | | | | | | | 602.1 | 78.5 | | |
| DJ EURO STOXX Value (iShares) | | | | | | | | | | | | | | | | | | | | 4.8 | 1.8 | 4.0 | 3.3 | | | 760.1 | 0.2 | | | | | | | 774.2 | 45.5 | | |
| SUM DJ STOXX BROAD, SIZE AND STYLE | | | | | | | | | | | | | | | | | | | | | | | | | | | | | | | | | 3'308.1 | 1'474.3 | | | |
| DOW JONES STOXX SPECIALTY | | | | | | | | | | | | | | | | | | | | | | | | | | | | | | | | | | | | | |
| DJ STOXX Select Dividend 30 (IndexChange) | | | | | | | | | | | | | | | | | | | | | 20.6 | | | | | | | | | | | | | 0.1 | 20.7 | 138.3 | |
| DJ STOXX Select Dividend 30 (Lyxor) | | | | | | | | | | | | | | | | | | | | | | | | | | | | | | | | | | | | 18.1 | 0.0 |
| DJ EURO STOXX Select Dividend 30 (IndexChange) | | | | | | | | | | | | | | | | | | | | | 186.0 | | | | | | | | | | | | | | 0.1 | 186.1 | 914.1 |
| DJ EURO STOXX Select Dividend 30 (iShares) | | | | | | | | | | | | | | | | | | | | 29.7 | 9.4 | 9.9 | | | | 838.1 | 1.0 | | | | | | | | 888.1 | 394.4 | |
| DJ EURO STOXX 50 BuyWrite (Lyxor) | | | | | | | | | | | | | | | | | | | | | | | | | | | | | | | | | | | | 22.3 | 45.8 |
| DJ EURO STOXX Sustainability 40 (IndexChange) | | | | | | | | | | | | | | | | | | | | | 1.4 | | | | | | | | | | | | | | | 1.4 | 23.6 |
| SUM DJ STOXX SPECIALTY | | | | | | | | | | | | | | | | | | | | | | | | | | | | | | | | | 1'136.7 | 1'516.2 | | | |
| TOTAL DOW JONES STOXX ETFs | | | | | | | | | | | | | | | | | | | | | | | | | | | | | | | | | 16'552.6 | 22'782.3 | | | |

ETFs ON DJ BLUE-CHIP, TMI, SIZE & STYLE INDICES – ASSETS UNDER MANAGEMENT AND TURNOVER



| INDEX/PRODUCT NAME | MANAGER | | | | | | | | | | | | | TURNOVER BY EXCHANGE (MEUR) | | | | | | | | | | Total Turnover (MEUR) | AUM (MEUR) | | | | | | | | | | | | | |
|---|-------------------------|---------------------------|------|----------------|-------------|---------------|------------------------|---------------------|----------------------|--------------------------|------------------------------|------------------------|--------------|-----------------------------|------------------------------|---------------------|----------------------|---------------|--------------|----------------|-----------------|--------------------|----------------|-----------------------|------------|---------------|-------------------|-------------|---------------|-----|-----------------|----------------|-------------|----------|---------|-------|-------|------|
| | AXA Investment Managers | Barclays Global Investors | BBVA | BMD Securities | BNP Paribas | Deutsche Bank | Dexia Asset Management | Finans Portfoy A.S. | First Trust Advisors | INDEXCHANGE Investment A | K.S.M. Financial Instruments | Lyxor Asset Management | PDR Services | Société Général AM | State Street Global Advisors | TD Asset Management | UBS Asset Management | American S.E. | Bolsa Madrid | Borsa Italiana | Deutsche Boerse | Euronext Amsterdam | Euronext Paris | | | Istanbul S.E. | Johannesburg S.E. | London S.E. | New York S.E. | SWX | Tel Aviv S.E. | Toronto S.E. | Vienna S.E. | virt-x | | | | |
| DOW JONES INDUSTRIAL AVERAGE | | | | | | | | | | | | | | | | | | | | | | | | | | | | | | | | | | | | | | |
| DJ Industrial Average (DIAMONDS) (SSGA) | | | | | | | | | | | | | | | | | 17'077.6 | | | | n/a. | 0.0 | | | | | | | | | | | | 17'077.6 | 5'215.7 | | | |
| DJ Industrial Average (IndexChange) | | | | | | | | | | | | | | | | | | | | | 6.8 | | | | | | | | | | | | | 6.8 | 115.6 | | | |
| DJIA (KSM) | | | | | | | | | | | | | | | | | | | | | | | | | | | | | | | | | | 3.7 | 3.7 | 0.0 | | |
| DJ Industrial Average (Lyxor) | | | | | | | | | | | | | | | | | | | | | 5.3 | 0.1 | 26.2 | | | | | | | | | | | 1.0 | 24.0 | 56.6 | 308.6 | |
| DJ Industrial Average (UBS) | | | | | | | | | | | | | | | | | | | | | 7.3 | | | | | | | | | | | | | 18.0 | 15.8 | 41.1 | 101.8 | |
| DJ Transportation Average (iShares) | | | | | | | | | | | | | | | | | | | | | | | | | | | | | | | | | | 926.6 | 926.6 | 333.4 | | |
| DJ Industrial Average Short (ProShares) | | | | | | | | | | | | | | | | | | | | | | | | | | | | | | | | | | | 69.4 | 69.4 | 75.4 | |
| DJ Industrial Average Ultra (ProShares) | | | | | | | | | | | | | | | | | | | | | | | | | | | | | | | | | | | 78.7 | 78.7 | 68.2 | |
| DJ Industrial Average UltraShort (ProShares) | | | | | | | | | | | | | | | | | | | | | | | | | | | | | | | | | | | 225.3 | 225.3 | 176.6 | |
| SUM DOW JONES INDUSTRIAL AVERAGE | | | | | | | | | | | | | | | | | | | | | | | | | | | | | | | 18'485.9 | 6'395.3 | | | | | | |
| DOW JONES GLOBAL TITANS 50 | | | | | | | | | | | | | | | | | | | | | | | | | | | | | | | | | | | | | | |
| DJ Global Titans 50 (IndexChange) | | | | | | | | | | | | | | | | | | | | | | 1.8 | | | | | | | | | | | | | | 1.8 | 53.5 | |
| DJ Global Titans 50 (Lyxor) | | | | | | | | | | | | | | | | | | | | | 3.0 | | 1.1 | | | | | | | | | | | 0.4 | 0.6 | 5.1 | 67.4 | |
| DJ Global Titans 50 (Axa EasyETF) | | | | | | | | | | | | | | | | | | | | | n/a. | 0.1 | | | | | | | | | | | | | | 0.1 | 9.3 | |
| DJ Global Titans 50 (SSGA) | | | | | | | | | | | | | | | | | | | | | | | | | | | | | | | | | | | 21.0 | 21.0 | 186.3 | |
| SUM DOW JONES GLOBAL TITANS | | | | | | | | | | | | | | | | | | | | | | | | | | | | | | | 27.94 | 316.56 | | | | | | |
| DOW JONES COUNTRY TITANS | | | | | | | | | | | | | | | | | | | | | | | | | | | | | | | | | | | | | | |
| DJ Japan Titans 100 (UBS) | | | | | | | | | | | | | | | | | | | | | | | | | | | | | | | | | | 19.8 | 8.8 | 28.5 | 390.7 | |
| DJ Japan Titans 100 (UBS) I | | | | | | | | | | | | | | | | | | | | | | | | | | | | | | | | | | | | | 0.0 | 24.0 |
| DJ Germany Titans 30 (UBS) | | | | | | | | | | | | | | | | | | | | | 14.3 | | | | | | | | | | | | | | | 14.3 | 37.5 | |
| DJ Turkey Titans 20 (Finansbank) | | | | | | | | | | | | | | | | | | | | | | | | | | | | | | | | | | | 181.0 | 181.0 | 31.7 | |
| Turkey Non-Financial Istanbul 20 (Finansbank) | | | | | | | | | | | | | | | | | | | | | | | | | | | | | | | | | | | 19.1 | 19.1 | 0.6 | |
| DJ Turkish Smaller Istanbul 25 (Finansbank) | | | | | | | | | | | | | | | | | | | | | | | | | | | | | | | | | | | 30.6 | 30.6 | 0.6 | |
| DJ Russia Titans 10 (Lyxor) | | | | | | | | | | | | | | | | | | | | | 52.5 | 7.8 | 65.0 | | | | | | | | | | | | | 125.3 | 197.0 | |
| Lyxor ETF Russia USD | | | | | | | | | | | | | | | | | | | | | | | | | | | | | | | | | | | 15.0 | 15.0 | 0.0 | |
| DJ Turkey Titans 20 (Lyxor) | | | | | | | | | | | | | | | | | | | | | 14.2 | 0.9 | 14.9 | | | | | | | | | | | | | 29.9 | 59.5 | |
| SUM DOW JONES COUNTRY TITANS | | | | | | | | | | | | | | | | | | | | | | | | | | | | | | | 443.7 | 741.4 | | | | | | |

ETFs ON DJ STOXX BLUE-CHIP & SECTOR INDICES – DEVELOPMENT OF ASSETS AND TURNOVER



DJ STOXX INDICES – COMPOSITION CHANGES



| ADDITIONS | | | DELETIONS | | |
|--------------------------------|--------------|--------------------|-------------------------|--------------|--|
| NAME | ISIN | INDEX | NAME | ISIN | INDEX |
| INTESA SANPAOLO S.P.A. | IT0000072618 | DJ EURO STOXX 50 | SAN PAOLO IMI | IT0001269361 | DJ EURO STOXX 50, DJ STOXX 600, Style Indexes: Value |
| SIG | GB0008025412 | DJ STOXX 600 | GERMANOS | GRS363333006 | DJ STOXX TMI Small, Style Indexes: Growth |
| BAKKAVOR GROUP HF | IS0000000099 | DJ STOXX TMI Small | WELLINGTON UNDERWRITING | GB0009474080 | DJ STOXX TMI Small |
| ACTAVIS GROUP HF | IS0000000420 | DJ STOXX TMI Small | FYFFES | IE0003295239 | DJ STOXX TMI Small, Style Indexes: Value |
| FL GROUP HF | IS0000000289 | DJ STOXX TMI Small | SAURER R | CH0012345143 | DJ STOXX TMI Small |
| STRAUMUR-BURDARAS INVESTM BANK | IS0000000644 | DJ STOXX TMI Small | BCA FIDEURAM | IT0000082963 | DJ STOXX TMI Small |
| LANDSBANKI ISLANDS | IS0000000156 | DJ STOXX TMI Small | | | |
| GLITNIR BANKI HF | IS0000000131 | DJ STOXX TMI Small | | | |
| EXISTA | IS0000013175 | DJ STOXX TMI Small | | | |
| KAUPTHING | IS0000001469 | DJ STOXX TMI Small | | | |
| | | | | | |

You will find a full list of all IPO composition changes on our website: www.stoxx.com (-> News -> Index Composition).

CONTACTS



Europe

Lars Hamich

Managing Director STOXX Ltd.

+41 58 854 2302

lars.hamich@stoxx.com

Rosa Anna Grimaldi

BE, FR, GR, IT, TR, IL, Northern Africa

+33 1 4070 8004

rosanna.grimaldi@stoxx.com

Dr. Markus Thomas

AT, GER, LUX, CH, CEE

+49 69 2972 5296

markus.thomas@stoxx.com

Peter Wölger

DK, FI, NO, SE, Baltic

+46 8 5861 0776

peter.wolger@stoxx.com

Eduardo Escario

ES, PT, Northern Africa

+34 91 395 8137

eduardo.escario@dowjones.com

Patrick Witteveen

IE, NL, UK

+44 207 864 4343

patrick.witteveen@stoxx.com

U.S.

Richard Ciuba

+1 609 520 7172

richard.ciuba@dowjones.com

Asia/Pacific

Anthony Yeung

+852 2831 2580

anthony.yeung@dowjones.com

Globally integrated index families: www.stoxx.com www.djindexes.com

STOXX LIMITED A Joint Venture of Deutsche Börse AG, Dow Jones & Company and SWX Group

Disclaimer:

The Monthly Report may include facts, views, opinions and recommendations of individuals and organizations deemed of interest. Neither STOXX, Dow Jones nor any of their respective affiliates, agents and licensors guarantee the accuracy, completeness or timeliness of, or in any way endorse, these facts, views, opinions or recommendations. Due to the number of sources from which content in the Monthly Report is obtained, and the inherent hazards of electronic distribution, there may be delays, omissions or inaccuracies in such content.

Neither STOXX, Dow Jones nor any of their respective affiliates, agents and licensors warrant the accuracy, completeness, currentness, noninfringement, merchantability or fitness for a particular purpose of the content of the Monthly Report. To the extent permitted under applicable law, neither STOXX, Dow Jones nor any of their respective affiliates, agents or licensors shall be liable to you or anyone else for any loss or injury, in any way related with procuring, compiling, interpreting, reporting or delivering the Monthly Report and any content through the Monthly Report. In no event will STOXX, Dow Jones, or any of their respective affiliates, agents or licensors be liable to you or anyone else for any decision made or action taken by you in reliance on such content or the Monthly Report. To the extent permitted under applicable law, neither STOXX, Dow Jones, nor any of their respective affiliates, agents and licensors shall be liable to you or anyone else for any damages (including, without limitation, consequential, special, incidental, indirect, or similar damages) even if advised of the possibility of such damages.

STOXX is a registered trademark of STOXX Limited. Dow Jones and Dow Jones Indexes are service marks of Dow Jones & Company Inc. Neither STOXX nor Dow Jones nor Dow Jones Indexes sell, sponsor or recommend the purchase of financial products based on their indices.